

RAC D
2011 HospitalData Analysis

July 2013

Hospital in RAC D	Designation Level	Number of Records	Number of Transfers Received
Hendrick Medical Center	3	1045	363
Abilene Regional Medical Center	4	124	7
Brownwood Regional Medical Center	4	144	3
Coleman County Medical Center	4	44	0
Comanche County Medical Center	4	89	0
Eastland Memorial Hospital	4	120	0
Fisher County Hospital District	4	31	0
Hamlin Memorial Hospital	4	12	0
Knox County Hospital	4	31	0
Mitchell County Hospital	4	70	0
Rolling Plains Memorial Hospital	4	138	0
Stamford Memorial Hospital	4	42	0
Stephens Memorial Hospital	4	62	0
Throckmorton County Memorial Hospital	4	15	0
Anson General Hospital	0	16	0
Haskell Memorial Hospital	0	42	0
Stonewall Memorial Hospital	0	30	0

363 TRANSFERS INTO HENDRICK MEDICAL CENTER

FACILITY NUMBER	FACILITY NAME	FACILITY RAC	DESIGNATION LEVEL	# TRANSFERS
1775132	Rolling Plains Memorial Hospital	D	4	83
671183	Eastland Memorial Hospital	D	4	42
2150428	Stephens Memorial Hospital	D	4	33
250465	Brownwood Regional Medical Center	D	4	22
1273320	Stamford Memorial Hospital	D	4	20
420660	Coleman County Medical Center	D	4	19
765136	Fisher County Hospital District	D	4	19
2210034	Abilene Regional Medical Center	D	4	18
1041800	Haskell Memorial Hospital	D	0	14
1382170	Knox County Hospital	D	4	14
2170121	Stonewall Memorial Hospital	D	0	14
1680680	Mitchell County Hospital	D	4	12
479090	Comanche County Medical Center	D	4	11
1270107	Anson General Hospital	D	0	9
2003797	North Runnels Hospital	K	0	9
1271785	Hamlin Memorial Hospital	D	4	6
2243545	Throckmorton County Memorial Hospital	D	4	5
2083291	Cogdell Memorial Hospital	B	4	5
2000226	Ballinger Memorial Hospital District	K	4	4
1545150	Heart Of Texas Memorial Hospital	K	4	2
380595	Childress Regional Medical Center	A	4	1
2145095	Starr County Memorial Hospital	V	4	1

40 TRANSFERS OUT OF HENDRICK MC TO OTHER ACUTE CARE FACILITY				
FACILITY NUMBER	FACILITY NAME	FACILITY RAC	DESIGNATION LEVEL	COUNT
1526011	University Medical Center-Lubbock	B	1	10
2201435	Cook Children's Medical Center	E	2	10
570950	Parkland Memorial Hospital	E	1	10
1846196	Harris Pointe Medical Center	E	0	2
1011970	Memorial Hermann Memorial City Medical Center	Q	0	1
143420	Scott & White Memorial Hospital - Temple	L	1	1
1522360	Covenant Medical Center - Lubbock	B	2	1
1706423	Solara Hospital Conroe	Q	0	1
2206413	Cook Children's Northeast Hospital	E	0	1
2210034	Abilene Regional Medical Center	D	4	1
2433760	United Regional Health Care System - 11th St	C	3	1
2463366	Scott & White Hospital-Taylor	O	4	1

7 TRANSFERS **INTO** Abilene Regional Medical Center

FACILITY NUMBER	FACILITY NAME	FACILITY RAC	DESIGNATION LEVEL	# TRANSFERS
1680680	Mitchell County Hospital	D	4	2
1775132	Rolling Plains Memorial Hospital	D	4	1
1273320	Stamford Memorial Hospital	D	4	1
671183	Eastland Memorial Hospital	D	4	1
1041800	Haskell Memorial Hospital	D	0	1
1382170	Knox County Hospital	D	4	1

3 TRANSFERS **INTO** Brownwood
Regional Medical Center

FACILITY NUMBER	FACILITY NAME	FACILITY RAC	DESIGNATION LEVEL	# TRANSFERS
479090	Comanche County Medical Center	D	4	2
671183	Eastland Memorial Hospital	D	4	1

42 different known EMS entities transported patients to the hospital (also reported "Not transported by EMS" and "Unknown EMS Provider")

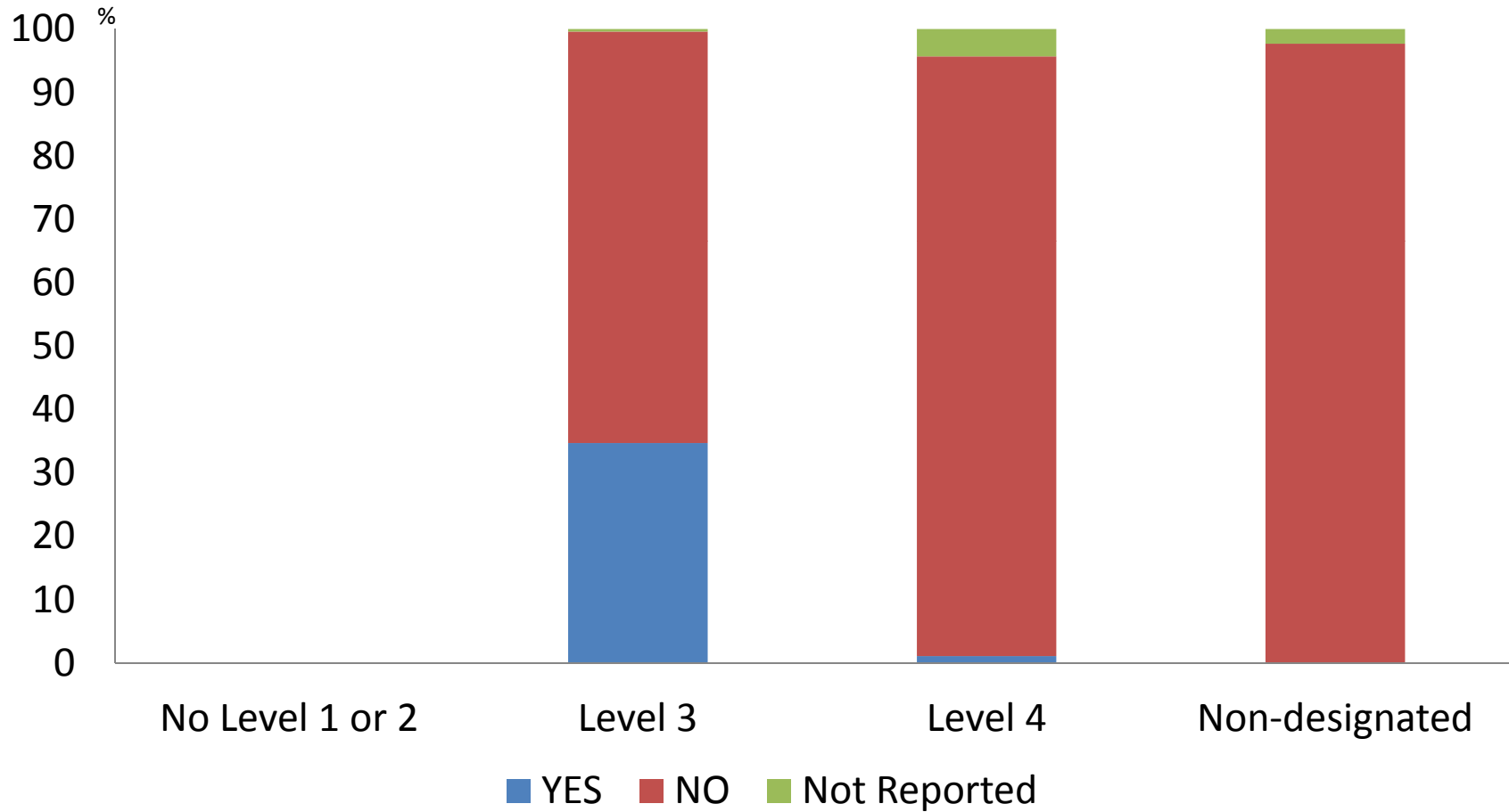
EMS Facility #	EMS Name	EMS RAC	COUNT				
999998	Not Transported By EMS	-	788				
221009	Metrocare Services - Abilene	D	361				
177004	Sweetwater Fd And Ambulance Service	D	125				
800073	Jorge Luis Pena DBA Guardian EMS	V	73				
67002	Eastland Memorial Hospital EMS	D	64				
215006	Stephens Co Ems	D	61				
47007	Comanche County Medical Center EMS	D	61				
104002	Haskell Co. Ambulance Service Inc	D	47				
168002	Mitchell Co Ambulance Srvs DBA Mitchell Co EMS	D	44				
999999	Unknown EMS Provider	-	40				
30001	Citizens EMS	D	38				
300075	Coleman County EMS	D	36				
221999	Native Air 3 - Abilene	D	30				
138006	Knox County Ems	D	29				
300510	Air Evac Lifeteam 63 - Abilene	D	27				
127001	Anson General Hosp Ems	D	25				
300514	Air Evac Lifeteam 52 - Brownwood	D	25				
127004	Stamford EMS Inc	D	21				
221007	Merkel EMS	D	20				
217003	Stonewall County Ambulance Service	D	18				

42 different known EMS entities transported patients to the hospital (also reported "Not transported by EMS" and "Unknown EMS Provider") Continued

76002	Fisher Co Hosp District EMS	D	18				
221002	South Taylor EMS	D	15				
300397	Shackelford County EMS	D	12				
800130	Ranger EMS	Q	12				
167002	Mills County EMS	L	9				
127006	Hamlin Ems	D	8				
200001	North Runnels Hosp Ems	K	8				
30002	Cross Plains EMS	D	8				
224003	Throckmorton Co Mem Hos EMS	D	7				
132001	Kent County Ems	B	6				
300509	Air Evac Lifeteam 54 - Big Spring	J	3				
76002	Fisher Co Hosp District EMS	D	2				
216001	Sterling County Ems	K	2				
57066	Careflite-Air	E	2				
101764	St Stephen EMS	Q	1				
154999	Brady Fire/EMS	K	1				
206002	San Saba County EMS Inc	O	1				
208998	Scurry County EMS	B	1				
	Med Trans Corp DBA Shannon						
226011	AirMed 1	K	1				
300019	Wilmer Vol Fire Dept	E	1				
3001	City of Lufkin Fire Department	H	1				
300518	Air Evac Lifeteam 55 - Mineral Wells	E	1				
67003	City of Ranger FD EMS	D	1				
72001	Dublin EMS	E	1				
	Total		2055				

Proportion of Transfers by Hospital Trauma Level

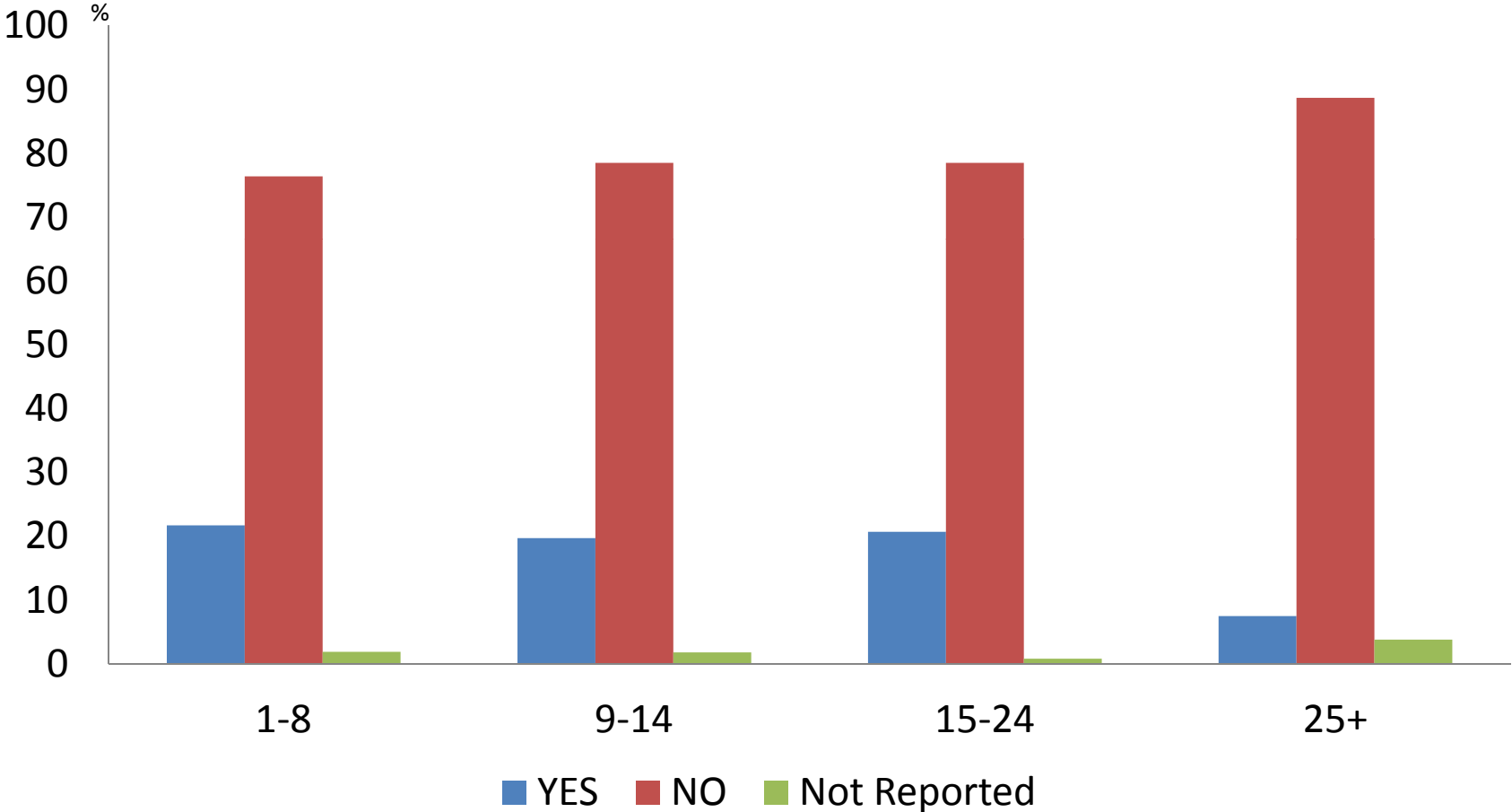
RAC D



Source: Texas EMS/Trauma Registry, 2011

Proportion of Transfers by Injury Severity Score

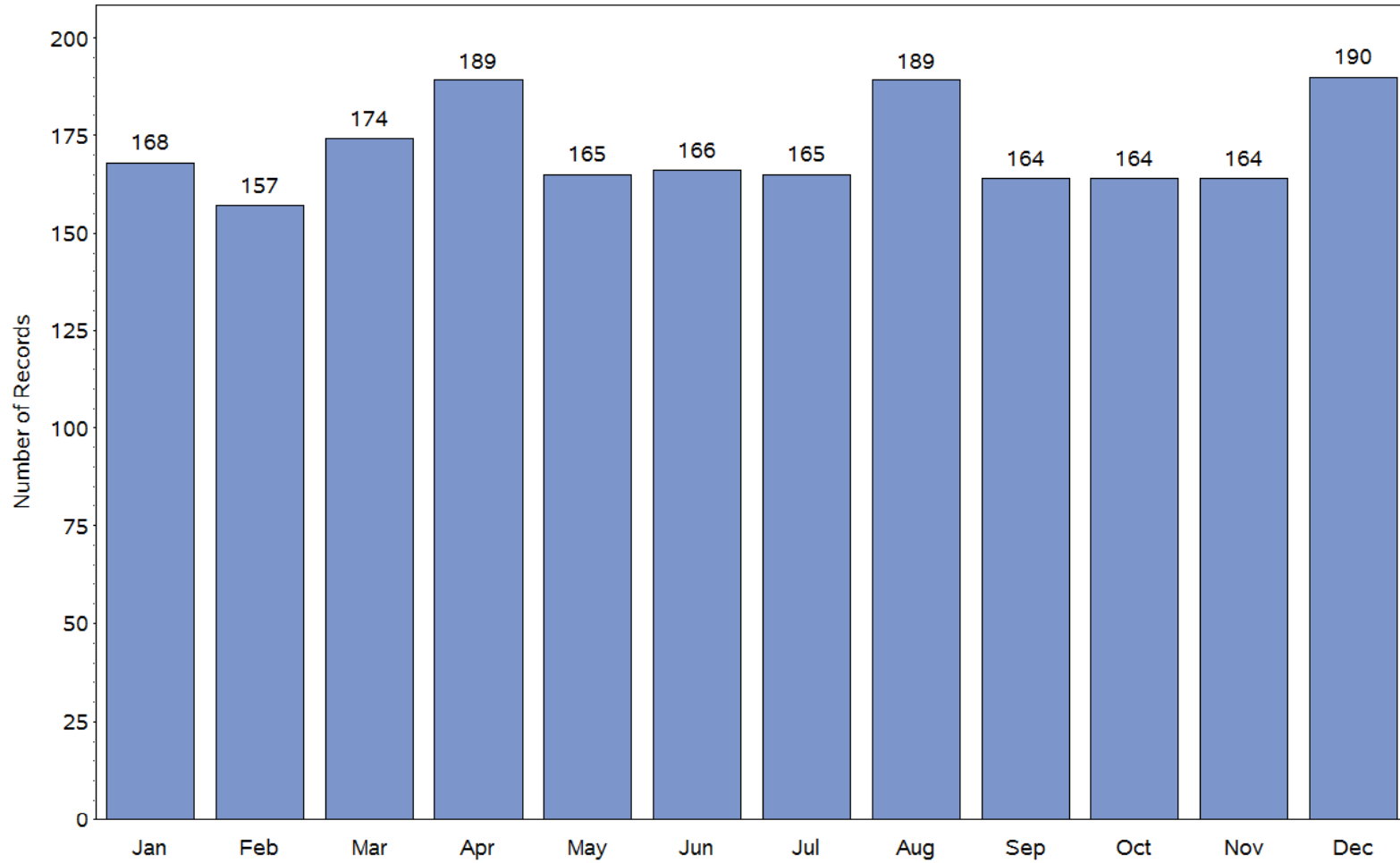
RAC D



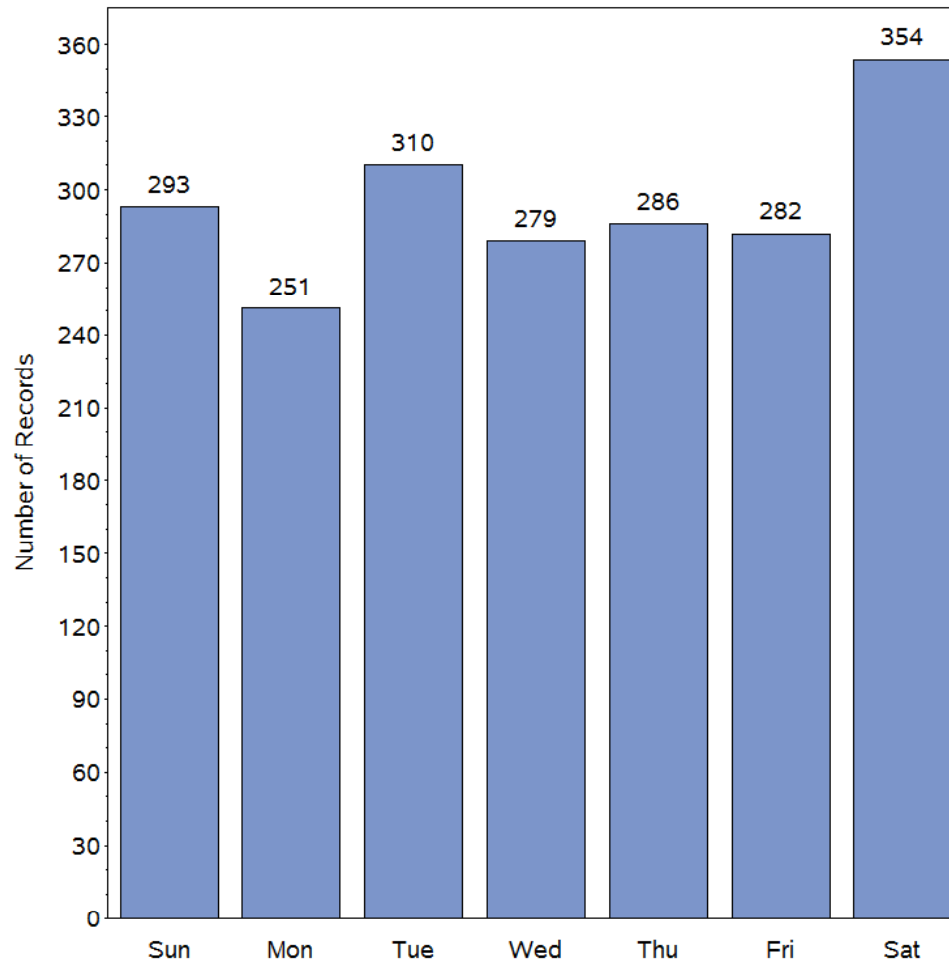
Source: Texas EMS/Trauma Registry, 2011

Number of Hospital Records by Month of Admission for RAC D (2011)

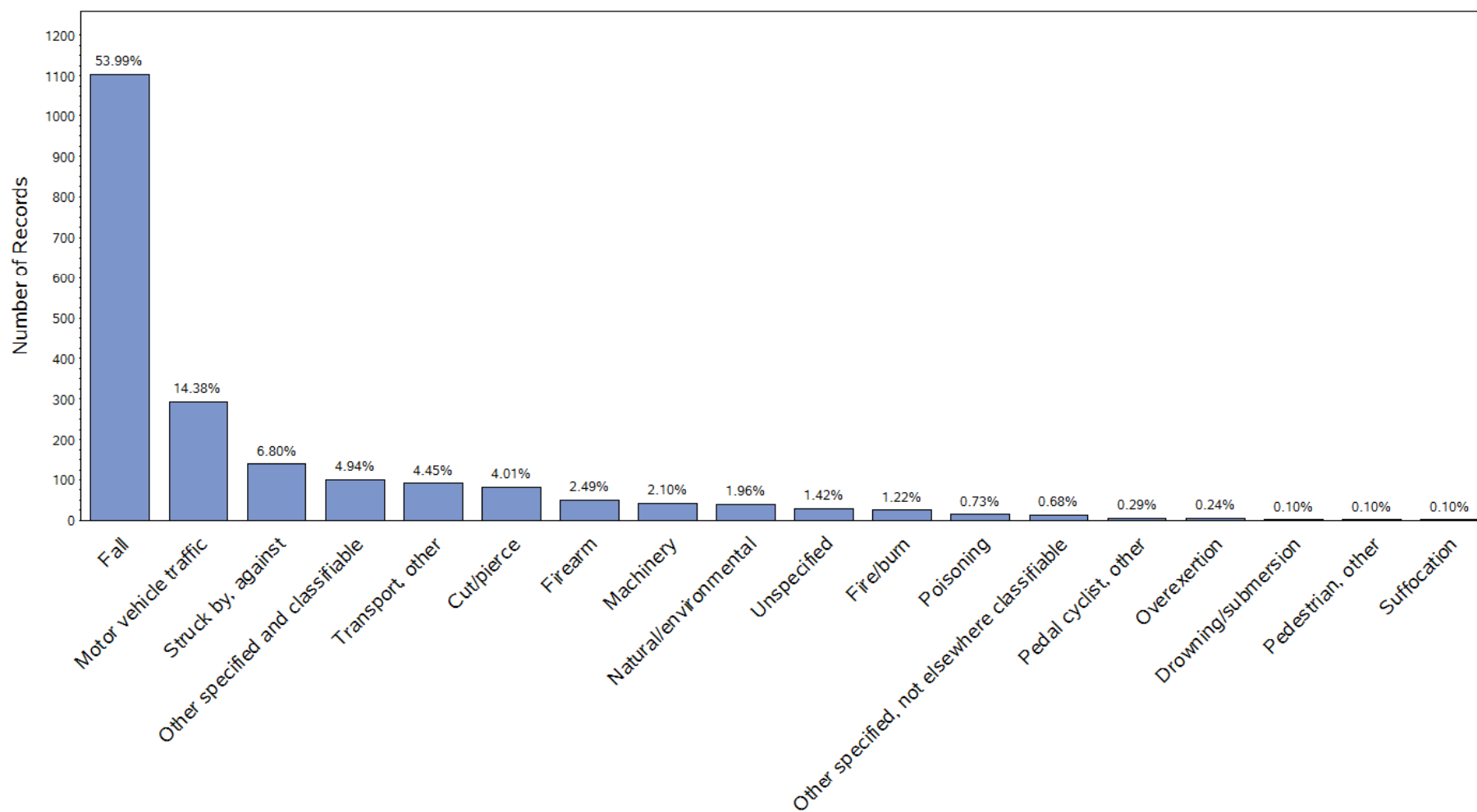
(Range: 157 to 190 records)



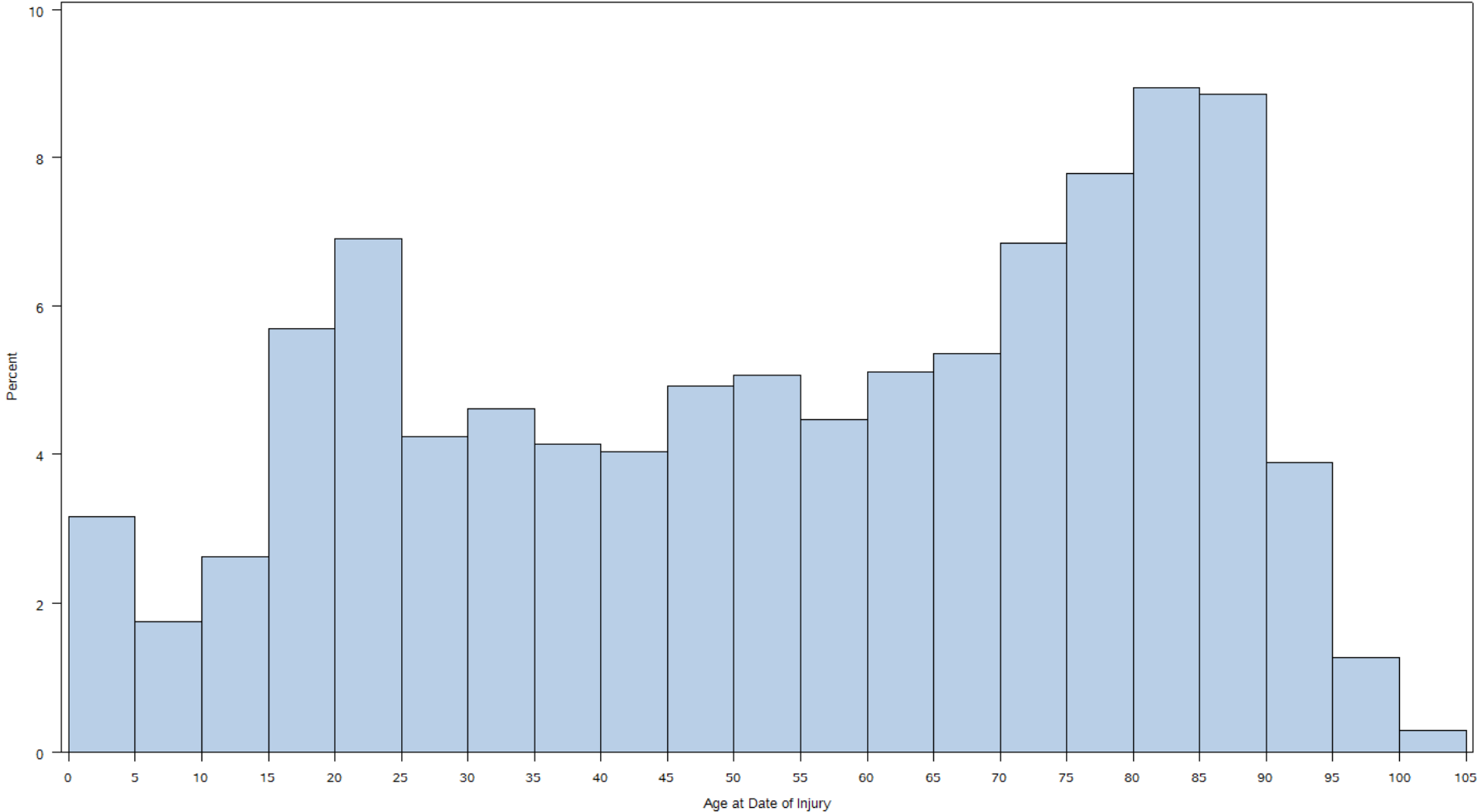
Number of Hospital Records by Day-of-Week of Admission for RAC D (2011)
(Range: 251 to 354 records)



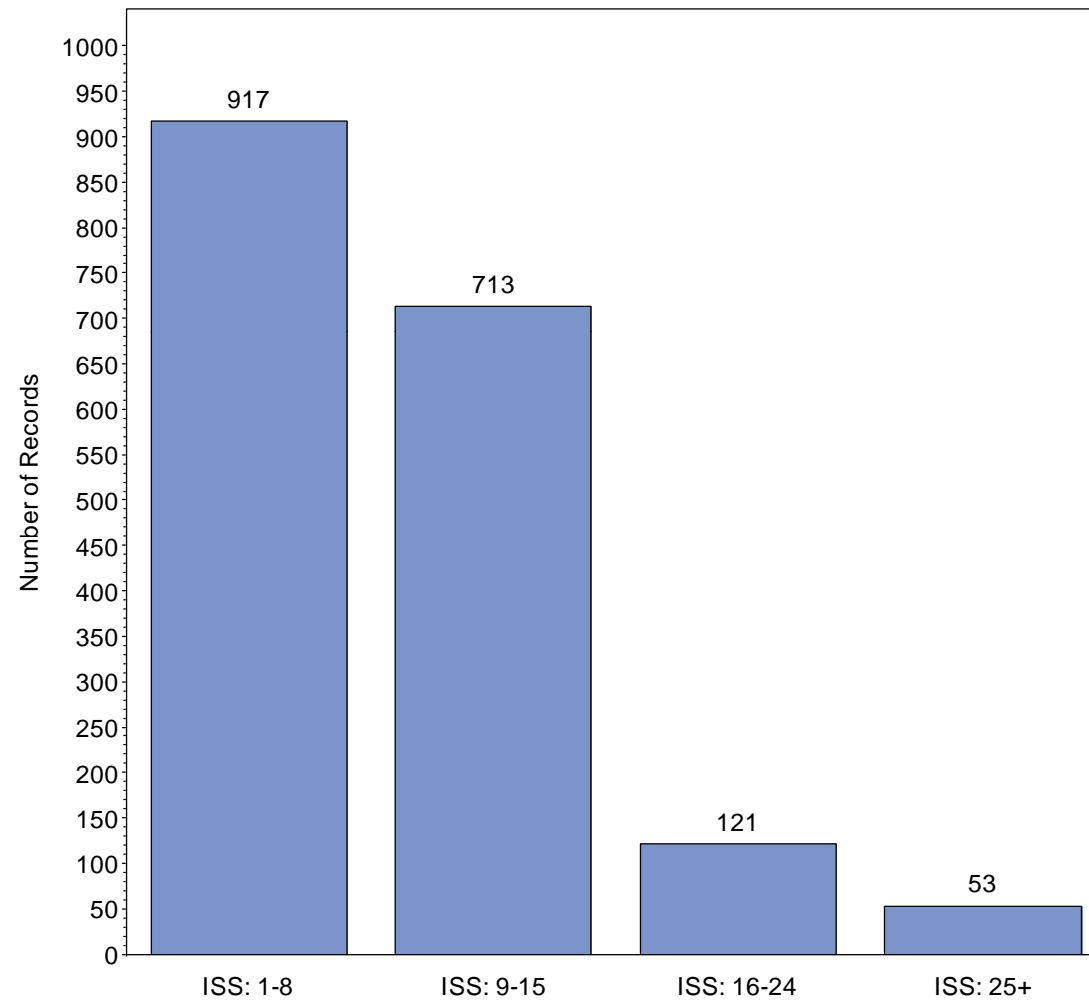
Hospital Records for Specific Causes of Injury for RAC D (2011)



Distribution of Age of Patient at Date of Admission

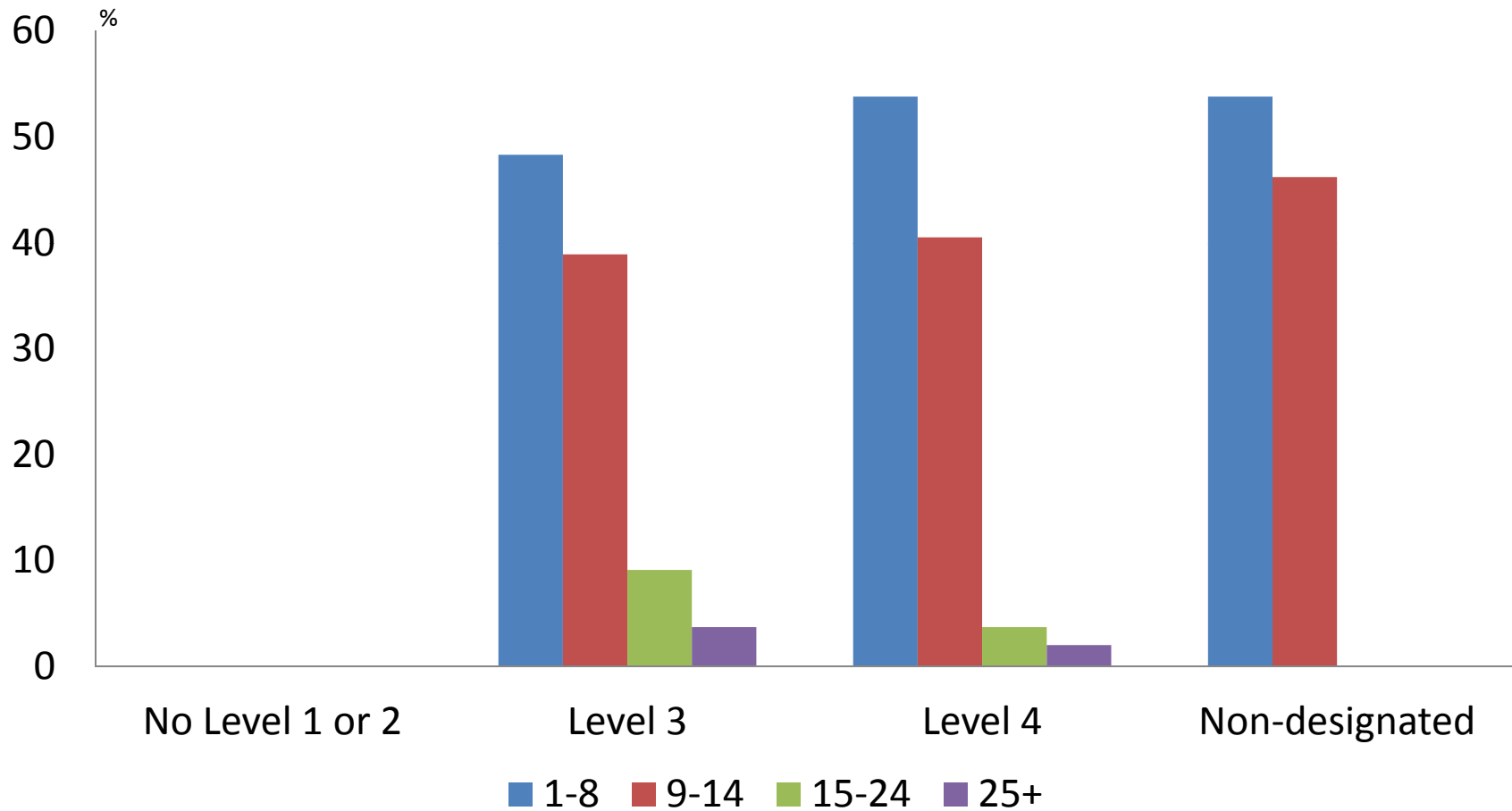


Number of Hospital Records by Injury Severity Score for RAC D (2011)

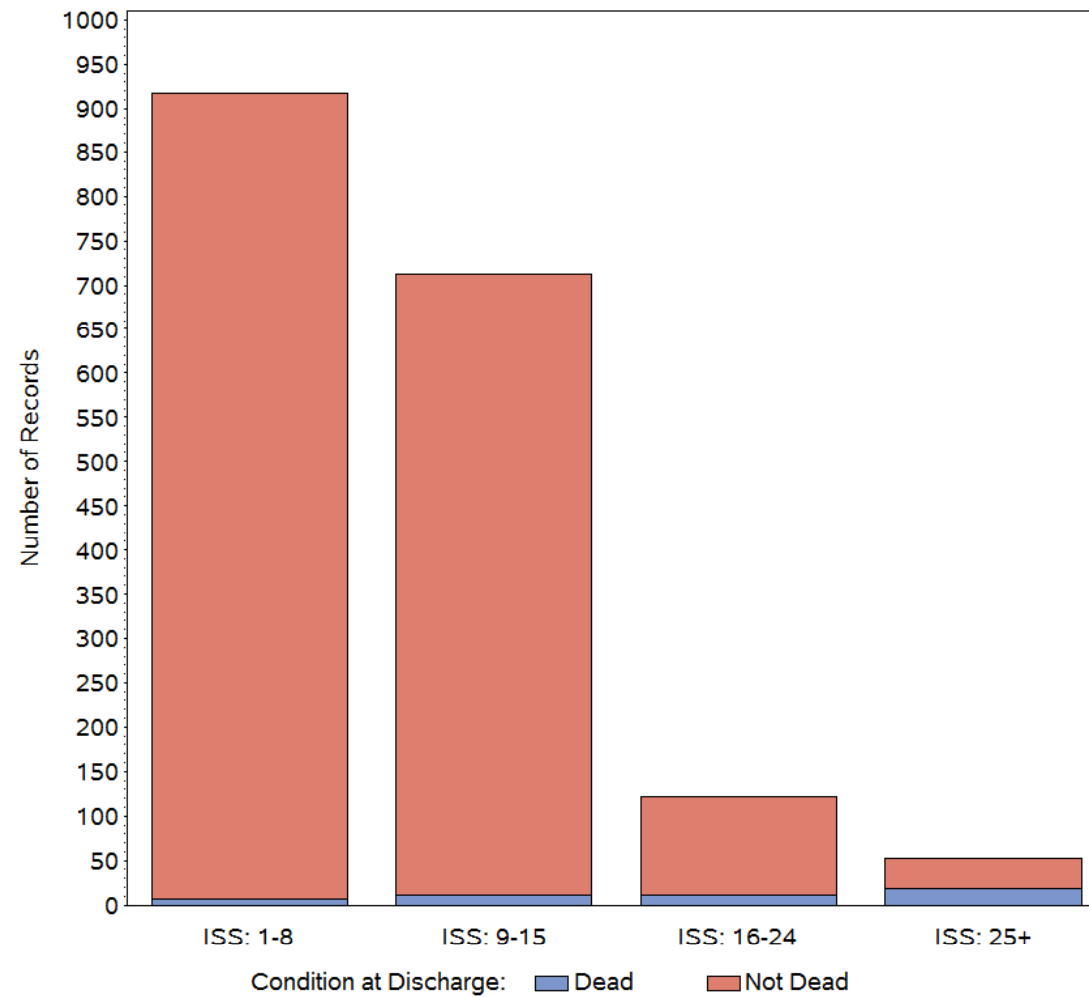


Injury Severity Score by Hospital Trauma Level

RAC D, 2011



Number of Hospital Records by Injury Severity Score for RAC D (2011)



Case Fatality Rate by Injury Severity Score

RAC D

ISS	# Records	%	# Deaths	Case Fatality Rate
1-8	908	44.4	7	0.77
9-14	710	34.8	11	1.55
15-24	121	5.9	11	9.18
25+	53	2.6	19	35.85
Total*	1,792	87.7	48	2.68

*Excludes 251 records that did not have ISS score recorded

Source: Texas EMS/Trauma Registry, 2011